

**NIC**  
 NATIONAL  
 INTEROPERABILITY  
 COLLABORATIVE  
 26-28 NOV 2018  
 AVON, CT

RODERICK BREMBY  
 JANICE BRUENDEL  
 ALLISON LOGAN  
 DAVID WILKINSON

**BRIDGEPORT PROSPERS,  
 BABY BUNDLE:**  
 MOVING UPSTREAM FROM BIRTH  
 TO THREE

"WHAT CAN WE DO THAT'S  
**BETTER** than the **BEST**  
 we have done SO FAR?"

- INVEST IN COMMUNITIES...
- BUILD CAPACITY ON 21ST CENTURY PLATFORMS...
- BUILD EVIDENCE and the IMPLEMENTATION SCIENCE...

**BRING THE COMMUNITY TOGETHER!** ... to HELP CHILDREN ACHIEVE THEIR DEVELOPMENTAL HEALTH?

HOW DO WE DO GOOD ASSESSMENTS? DO WE NEED TO HAVE NURSES DO THEM?



**TRUTH TO POWER!**  
 WE ENVISION A NATION WHERE ALL CHILDREN GROW UP

HEALTHY...  
 SAFE...  
 STRONG...

...but we aren't THERE yet...

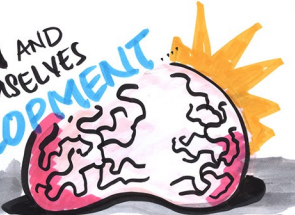
WE KNOW THAT **adversity** in **BEHAVIOR** and **DEVELOPMENT** MANIFEST THEMSELVES AS **trauma** AND

"BABIES LIVE IN FAMILIES... SO HOW DO WE SUPPORT THEIR FAMILIES?"

TOXIC STRESS in the EARLY YEARS of LIFE have **BIOLOGICAL IMPACTS** on the BODY!

ALL FAMILIES FACE SOME CHALLENGES...  
 SOME FAMILIES FACE MORE THAN OTHERS...

- POVERTY
- DISCRIMINATION
- TRAUMA
- SOCIAL DISRUPTION



BRAIN DEVELOPMENT in the FIRST **3** YEARS IS CRUCIAL...

WHAT WILL WE DO TO SUPPORT HEALTHY BRAINS? ... and HOW DO WE SUPPORT COMMUNITIES and FAMILIES in a TRUST-BUILDING and IMPACTFUL WAY?

**THE BRIDGEPORT BABY BUNDLE:**

HOW DO WE MAKE SURE ALL CHILDREN IN BRIDGEPORT are DEVELOPMENTALLY ON TRACK?

- SUPPORTED CARE in PARENTING.
- ADVOCATES and HELPERS...
- INNOVATION...
- TRACKING the IMPACT...
- BABY INVESTMENT BUNDLE

**BRIDGEPORT**

LOCATED IN A MIX OF WEALTHY COMMUNITIES... in the MIDST of a WEALTHY STATE.

HOWEVER... CHILDREN IN BRIDGEPORT 0-3 are already BEHIND...

PEOPLE, PLACES, PROGRAMS, POLICY, PRACTICE, POLITICS, PARTNERSHIPS

REMEMBER THE **Ps!**

**DON'T PERPETUATE SYSTEMIC BIAS!**

It's a COHORT MODEL!

- VIDEOS
- EARLY WELLNESS
- WELLNESS CHECKS
- UNIVERSAL SCREENINGS
- MATERNAL HEALTH



"I'M ALL THE Babies!"

— ADVOCATES, CHAMPIONS and HELPERS

**THINK ABOUT!**

- DATA and DATA SHARING...
- FINANCING...
- SERVICE and PROGRAM DESIGN...

WHAT SERVICES ALREADY EXIST WITH WHOM WE CAN PARTNER? WHAT \$ ARE BEING SPENT— ON WHAT?



THERE ARE PEOPLE WITH MONEY WHO WANT TO HELP.

**HUMAN SERVICE VALUE CURVE!**

STANDARD OF CARE...

A DIFFERENT WAY OF **DIAGNOSIS**...

PREDICTIVE ANALYTICS... and PRESCRIPTIVE ANALYTICS

In order to reduce COST in MEDICAID, we need to partner with the community!

WE HAVE A PHENOMENAL MEDICAID PROGRAM!

...but we are FULLY AT RISK.

WHAT HAS WORKED?

What do people **NEED**?

INTERACT with the PEOPLE WHO HAVE BEEN SERVED.

**EDUCATION!**

- It's about FAMILY ENGAGEMENT...
- It's about FAIRNESS, ACCESSIBILITY, and EQUITY.
- How can schools PARTNER with FAMILIES for BETTER OUTCOMES?
- Consider ACADEMIC and NON-ACADEMIC factors for SUCCESS.